

ATTACHMENT B

## **ATTACHMENT B**

**INDICATIVE FLOOR PLANS**

**280-288 GEORGE STREET, SYDNEY**



## Building Setbacks

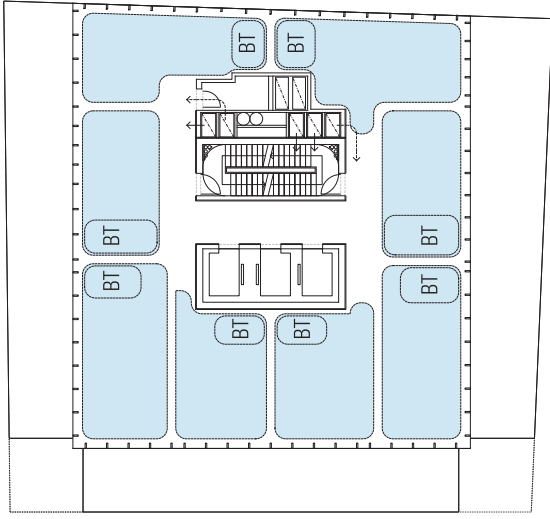
### Indicative Guest Floor Planning

Indicative guest floor planning demonstrates that the proposed floor plates can be planned efficiently for hotel use.

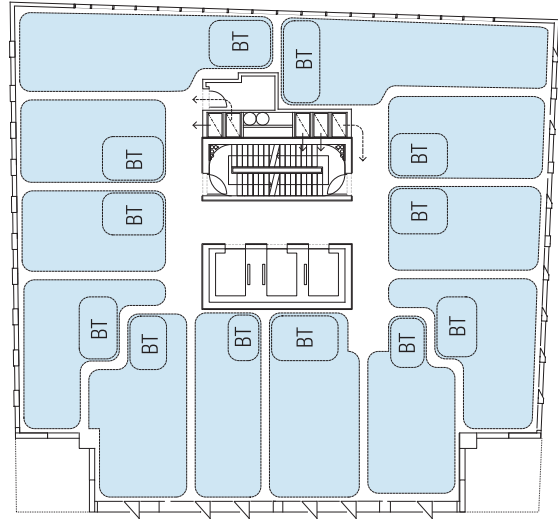
Indicative planning shows the floorplate can be readily adapted to the 3M setbacks to George, Hunter and Curtin Place without compromising efficiency.

A nil setback to the side boundary and a glazed curtain wall with required fire protection is proposed. This strengthens the creation of a free-standing tower in the round with consistent and active treatment to all façades.

Indicative guest floor planning demonstrates that the guest rooms will not rely on an eastern aspect for light, air and amenity.



Indicative Guest Floor  
Tower - Levels 14-26



Indicative Guest Floor  
Levels 2-13

# ATTACHMENT B